



VISCOUNT

Φ Physisplus The Editor



User Guide - EN

Edition: 1.1

TABLE OF CONTENTS

Notes about this guide 1

Overview 2

Installing Physis Plus The Editor 3

Running Physis Plus The Editor 6

 Connecting your Physis Plus organ 6

 Error messages displayed during connection 8

 Sections of the Physis Plus The Editor 9

Basic descriptions of the editor sections 10

 Stops section 10

 Voicing section 12

 Tuning section 13

 Setup section 14

 Outputs section 17

 Tools section 18

NOTES ABOUT THIS GUIDE

- Please keep this user guide safe.
- This user guide is an integral part of the product. The descriptions and illustrations contained in this publication are subject to change.
- Without prejudice to the essential characteristics of the product, the manufacturer reserves the right to make any changes to parts, details and accessories that it deems appropriate for the improvement of the product or for construction or commercial needs, at any time and without undertaking to update this publication promptly.
- All rights reserved, no part of this manual may be reproduced in any form without the express written permission of the manufacturer.
- All trademarks mentioned in this manual are the property of their respective manufacturers.
- Please read the enclosed information carefully. You will avoid wasting time and get the best performance from the product.
- The initials or numbers in square brackets [] indicate the names of the commands and connectors of the instrument. For example, [MASTER VOLUME] indicates the MASTER VOLUME potentiometer.
- The illustrations and screens are for information purposes only and may differ from your application.
- The information described in this guide refers to the application version when the document was written and may not reflect the functionality of the version you are using. Therefore, please check the website www.viscountinstruments.com periodically for the latest version and the availability of a more up-to-date guide.

This user guide is updated to version 1.2.0 of the application.

OVERVIEW

A Physis Plus organ presents exceptional capabilities on its own, making it a unique organ and a good choice for any organist, any church and any studio. But to obtain the best from your organ, Viscount created "Physis Plus - The Editor". Physis Plus The Editor is the only application software able to provide the finest instrument tuning and voicing, from every voice parameter, to the organ overall settings and audio routing. In addition to this, it allows you to modify parameters that are not available in the instrument display.

Physis Plus The Editor is easy-to-use, it is lightweight, runs on Windows, Mac OS and iOS, satisfying very low system requirements.

The Editor has a clear and simple user interface, which works with any screen resolution.

In particular Physis Plus The Editor allows you to do:

- Pilot organ stops and voices
- Select/Load/Remove alternative voices
- Instrument stop-by-stop voicing and fine tuning
- Setting the pitch and tuning, temperaments, tracker touch, reverb, tremulants, organ division and controls
- Console and organ setup
- Output routing and customization

Minimum system requirements

Operating System: Windows 7 (64 bit), Windows 8 (64 bit), Windows 10, Mac OS X ver. Lion 10.7 or later, iOS ver. 9.2 or later.

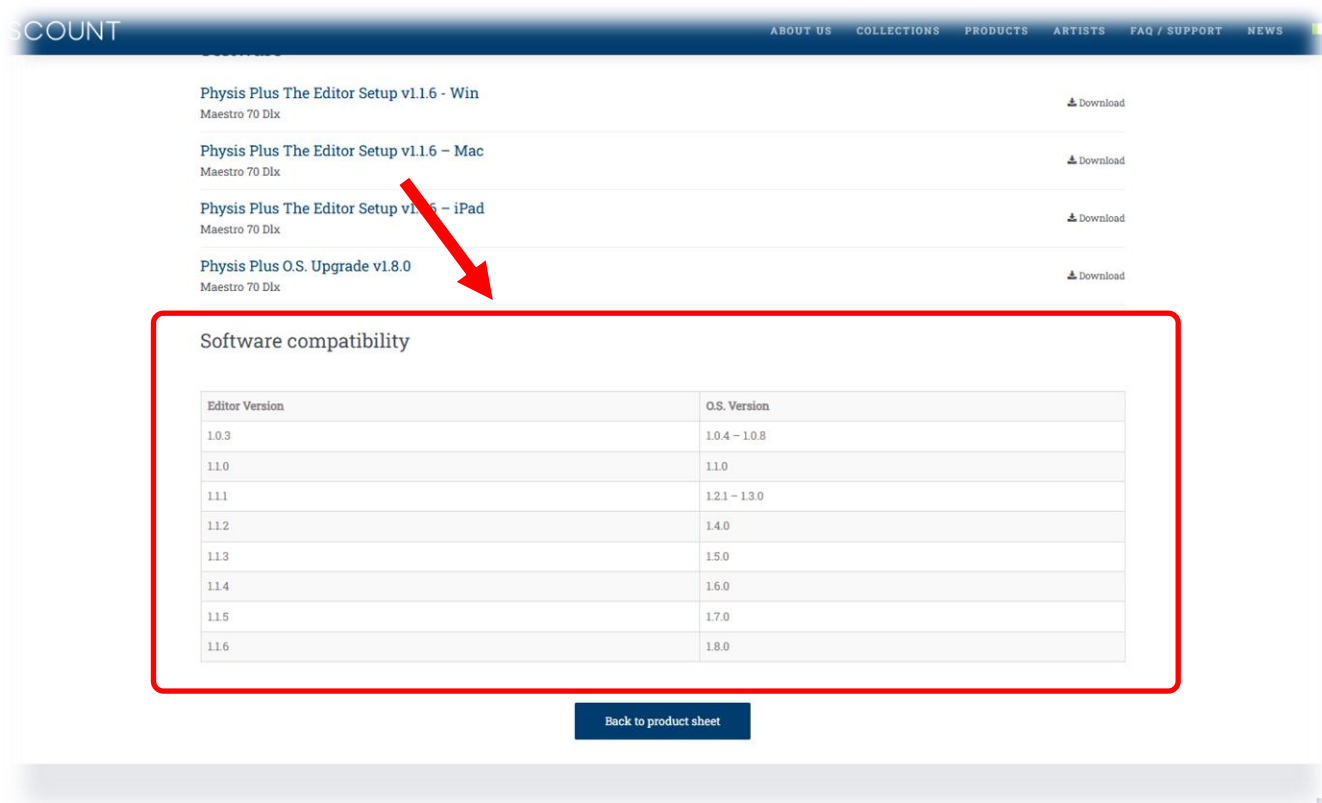
Ports on computer: a standard USB

Computer connection: A USB type A-B cable no longer than 3 meters.

Connection with iPad: Camera Connection Kit or USB adapter. One USB cable type A-B not longer than 3 meters.

To use the Editor correctly, you must be sure that the version of the organ operating system is compatible with the version of the Editor. However, it is always advisable to keep the organ updated with the latest version of O.S. as well as using the latest version of Editor.

In each Physis Plus model web page of the www.viscountinstruments.com web site, in the "Documents & software" section, you will find a table to know the correct version of the application based on the release of the operating system of your instrument.



The screenshot shows the Viscount website interface. At the top, there is a navigation bar with links for ABOUT US, COLLECTIONS, PRODUCTS, ARTISTS, FAQ / SUPPORT, and NEWS. Below this, there are four download links for Physis Plus The Editor Setup v1.1.6 in different formats: Win, Mac, iPad, and O.S. Upgrade v1.8.0. A red arrow points from the iPad download link to a table titled "Software compatibility".

Editor Version	O.S. Version
1.0.3	1.0.4 - 1.0.8
1.1.0	1.1.0
1.1.1	1.2.1 - 1.3.0
1.1.2	1.4.0
1.1.3	1.5.0
1.1.4	1.6.0
1.1.5	1.7.0
1.1.6	1.8.0

Below the table, there is a button labeled "Back to product sheet".

INSTALLING PHYSIS PLUS THE EDITOR

The application installation procedure varies depending on your operating system. The procedures for Windows, Mac and iOS operating systems are described below individually.

Windows

1. On the www.viscountinstruments.com web site, go to the “Documents & software” section of the web page of your Physis Plus model and click on the Physis Plus The Editor Setup vX.X.X – Win (X.X.X stands for the version of the Editor) field to download the Physis-Plus-The-Editor-Setup.zip file.

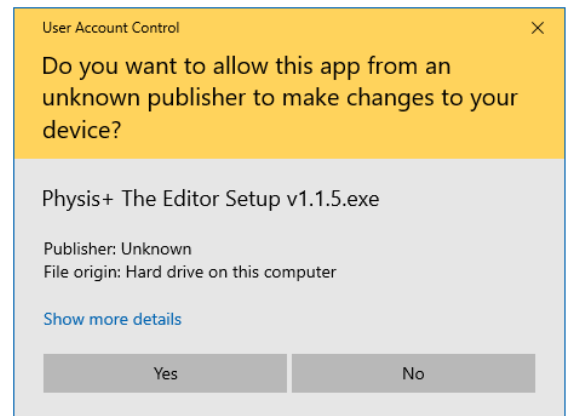
The screenshot shows the 'Software' section of the website. The following table represents the content of the software list:

Software Name	Download Link
PhysisPlus ReferenceManual (IT) ed 15	Download
PhysisPlus ReferenceManual (FR) ed 15	Download
PhysisPlus ReferenceManual (EN) ed 16	Download
PhysisPlus ReferenceManual (DE) ed 14	Download
PhysisPlus ExtAmpl Guide (EN)	Download
Physis Plus The Editor Setup v1.1.6 - Win	Download
Physis Plus The Editor Setup v1.1.6 – Mac	Download
Physis Plus The Editor Setup v1.1.6 – iPad	Download
Physis Plus O.S. Upgrade v1.8.0	Download

Below the software list is a 'Software compatibility' table:

Editor Version	O.S. Version
1.0.3	1.0.4 – 1.0.8

2. Open the .zip file and extract the contents to the desired folder.
3. Click on the extracted file to start the installation and follow the prompts on the screen. If a warning screen like the one illustrated here on the side, click Yes to continue installation.
4. Once the installation is complete, click on the file icon or on the desktop icon to launch the application.



Mac OS

1. On the www.viscountinstruments.com web site, go to the “Documents & software” section of the web page of your Physis Plus model and click on the Physis Plus The Editor vX.X.X – Mac (X.X.X stands for the version of the Editor) field to go the Mac App Store.

Editor Version	O.S. Version
1.0.3	10.4 – 10.8

2. Download the PhysisPlus Editor app from the App Store.
3. Once the installation is complete, launch the application from the "Applications" folder.

Mac App Store Preview

Screenshots



iOS

1. On the www.viscountinstruments.com web site, go to the “Documents & software” section of the web page of your Physis Plus model and click on the Physis Plus The Editor vX.X.X – iPad (X.X.X stands for the version of the Editor) field to go the Mac App Store.

Maestro 70 Dlx [Download](#)

PhysisPlus ReferenceManual (IT) ed 15
Maestro 70 Dlx [Download](#)

PhysisPlus ReferenceManual (FR) ed 15
Maestro 70 Dlx [Download](#)

PhysisPlus ReferenceManual (EN) ed 16
Maestro 70 Dlx [Download](#)

PhysisPlus ReferenceManual (DE) ed 14
Maestro 70 Dlx [Download](#)

PhysisPlus ExtAmpl Guide (EN)
Maestro 70 Dlx [Download](#)

Software

Physis Plus The Editor Setup v1.1.6 - Win
Maestro 70 Dlx [Download](#)

Physis Plus The Editor Setup v1.1.6 – Mac
Maestro 70 Dlx [Download](#)

Physis Plus The Editor Setup v1.1.6 – iPad
Maestro 70 Dlx [Download](#)

Physis Plus O.S. Upgrade v1.8.0
Maestro 70 Dlx [Download](#)

Software compatibility

Editor Version	O.S. Version
1.0.3	1.0.4 – 1.0.8

2. Download the PhysisPlus Editor app from the App Store.
3. Once the installation is complete, click on the icon to launch the application.

Mac App Store Preview

Open the Mac App Store to buy and download apps.

PhysisPlus Editor (4+) [View in Mac App Store](#)

Viscount Int.
★★★★ 2.0 + 1 Rating

Free

Screenshots Mac iPad

RUNNING PHYSIS PLUS THE EDITOR

Connecting your Physis Plus organ

Using PC or MacOS, plug a USB Type A connector into one of the USB ports of your computer and the Type B connector into the USB To Host port on the instrument.

When using an iPad, connect the instrument via the optional Camera Connection Kit or a USB adapter by plugging the Type A connector into the USB port on the iPad Connection Kit / adapter and the Type B connector into the USB To Host port on the instrument.



In the Opera / Maestro / Domus organ models you can find the USB To Host connector in a panel underneath the manuals. In this panel there are two USB connector, the USB To Host is the one on the right.

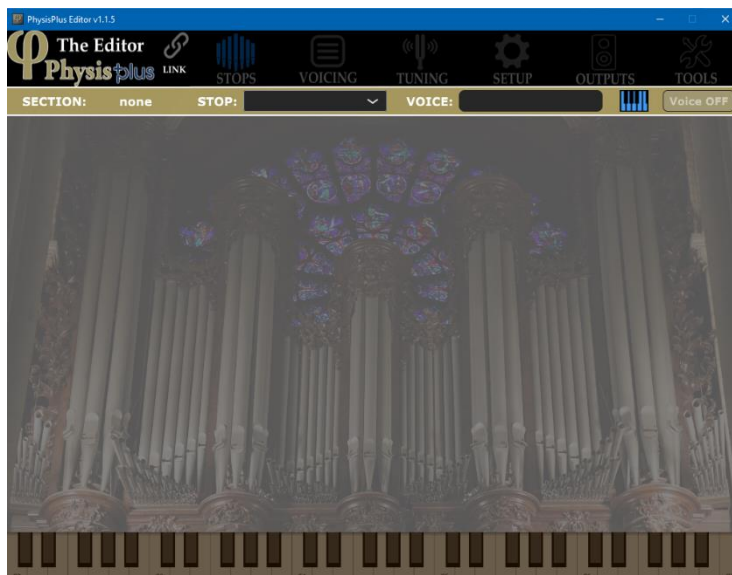
In the Cantorum Plus models the USB To Host connector is placed on the rear panel, named USB [TO HOST].

You can connect while the instrument is already turned on and the application already open.

NOTES

- With Windows operating systems, the first time you connect the instrument to your computer via USB, the operating system will ask you to install the necessary drivers. To do so, follow the prompts on the screen.
- With iPad we recommend using the original Camera Connection Kit or USB adapter. If a non-Apple adapter is used, correct operation is not guaranteed.
- If the operating system denies saving the file due to lack of permissions, or if you are no longer able to overwrite a file already present on your computer (without displaying an error message), right-click on the file icon (also on the desktop shortcut), then choose "Properties". Now select the "Security" tab and check "Run this program as administrator". Finally click on "Ok".

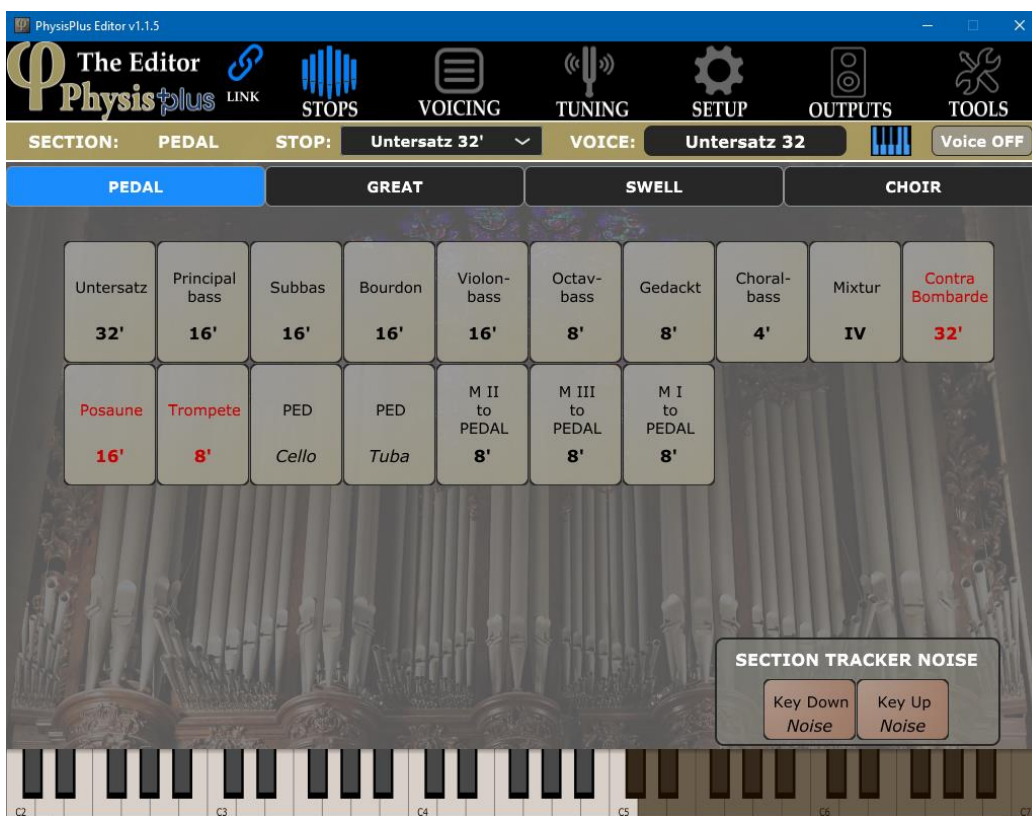
When started, the application will show an empty page like the one illustrated here on the side.





First of all you have to connect the Editor to the instrument. To do so click the LINK icon at the top left of the screen.

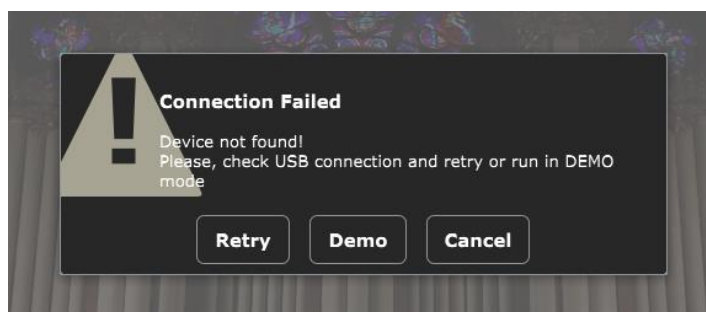
Once the connection is established you will see the stops of the Pedal section of your organ:



In add of this, after the connection the display of the organ shows the pop-up message “PHYSIS+ EDITOR CONNECTED” informing you that the connection has been made. Please keep in mind that when the organ is connected to the Editor you can not perform any operation with the display of the instrument.

Using the Demo mode

It is also possible to use the Physis Plus The Editor alone, without the presence of a Physis Plus organ, to learn about its features and capabilities. In fact, by launching the app without the connection of an organ, it will be showed this pop-up message:



By clicking the “Demo” button the Editor shows all the available screens and settings. Keep in mind that the presence or absence of the various settings depends on the organ model with which the Editor will be used.

Error messages displayed during connection

Device not found

Device not found! Please, check USB connection and retry...

Physis Plus The Editor cannot connect to the instrument because it is not being detected between USB devices connected to your computer or iPad.

If the instrument is properly connected to your computer or iPad, close the application, then turn the instrument off and on again and restart the application.

MIDI port already in use

The midi port may be in use by another application. Please, close it and retry

Physis Plus The Editor cannot connect to the instrument if there are other applications open in the computer that use the port connected to the organ and identified as "Physis+ MIDI Gadget". If you want to use the The Editor, disconnect the other applications from this port.

Connection Timeout

Connection to organ Timeout. Device does not respond, please check connection and reconnect.

Physis Plus The Editor has lost communication with the connected instrument. Make sure it is turned on and that the USB cable or Camera Connection Kit / USB adapter (when used with an iPad) is connected and undamaged.

Connection Link Timeout

Connection to organ Timeout. Device does not respond, please check connection and reconnect.

Physis Plus The Editor cannot connect or has lost communication with the instrument. Make sure it is turned on and that the USB cable or Camera Connection Kit / USB adapter (when used with an iPad) is connected and undamaged.

Another reason could be that the display of the organ is in a menu where it cannot communicate with the Editor. It is recommended to connect the Editor when the display shows the main page.

Connection Failed!

Organ Firmware version is too old, this could cause incompatibility issues. Please update Firmware and retry.

Firmware version of the organ is too old in order to use the Physis Plus The Editor and has to be updated to the latest version. Download the latest available version from www.viscountinstruments.com.

Connection Failed!

Editor version is too old, this could cause incompatibility issues. Please update Physis+ The editor.

You are running an older version of Physis Plus The Editor which is not compatible with the firmware currently installed on your instrument. Download the latest version of the Editor at www.viscountinstruments.com.

Connection Link Problem!

Connection Link Problem. Please go in console MAIN PAGE and retry.

Display of the organ is in a menu where it cannot communicate with the Editor. It is recommended to connect the Editor when the display shows the main page.

Connection Link Not Allowed!

Connection Link Not Allowed. Organ is LOCKED!

Editing of the organ is not allowed because the ORGAN LOCK function (User Params or Entire Organ mode) is active, so Physis Plus The Editor cannot connect. To enable the organ editing and Editor connecting, unlock the ORGAN LOCK function (see the instrument Reference Manual).

Connection Link ERROR!

Connection Link ERROR. Please Retry.

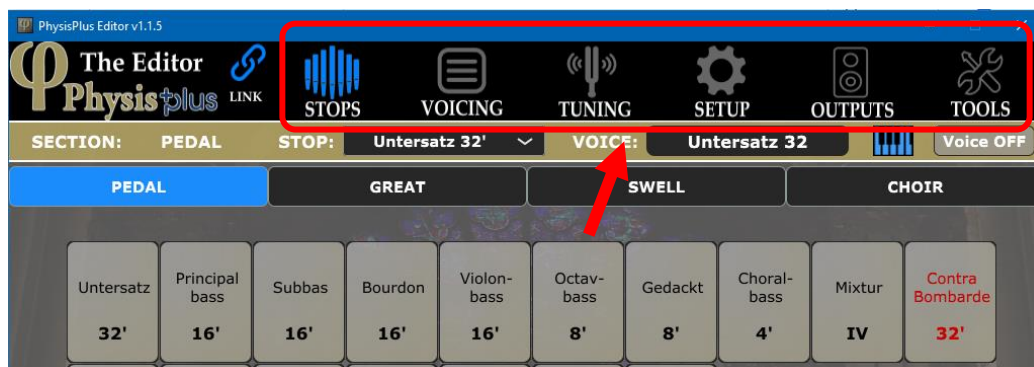
Physis Plus The Editor cannot receive all the necessary data from the instrument. Retry the operation, if this doesn't work, close the application then turn the instrument off and on again and restart the application.

NOTES

- *Using older computers, you can be disconnected if many other applications, in addition to the Physis Plus The Editor, are open and there's a high computer workload. In this case we recommended you close unneeded applications.*
- *Using a MacOS, it could be possible that the first time you connect the computer to the instrument, this is not automatically recognized. In this case, on the Mac go to Go → Utilities → Audio MIDI Setup → Window → Show MIDI Studio, open the drop menu to the top left and select New Configuration: now you will see the MIDI Gadget driver that is the MIDI driver of your Physis Plus organ. Keep this configuration selected and exit the MIDI Studio.*

Sections of the Physis Plus The Editor

The top menu bar of the screen is where you'll find the buttons for recalling the Physis Plus The Editor sections:



These buttons recall the following areas:

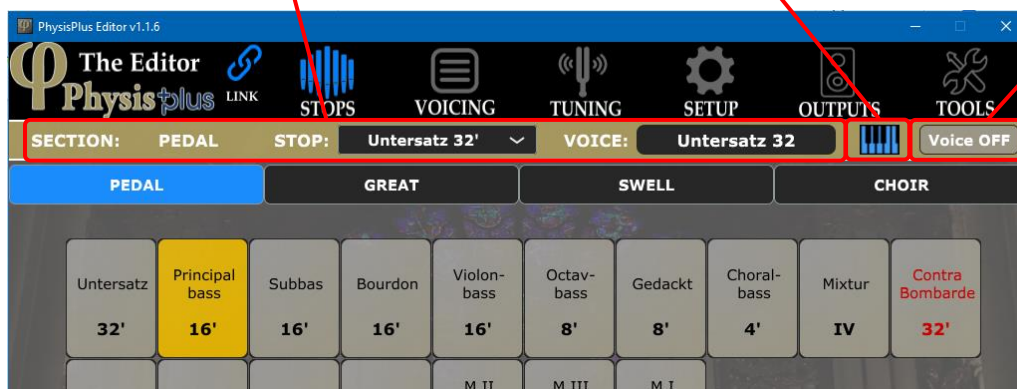
- **STOPS:** shows the map of all stops available in your organ. Here it's possible to switch on/off the stops, know which voice is managed by the stops, and also gives the possibility to remove, add, load and swap voices.
- **VOICING:** provides advanced editing for every individual voice. Such editing includes important sound engine parameters of the physical modeling of the voice, panning and routing.
- **TUNING:** provides advanced editing of Volume level and Pitch for each note of each voice, over the whole keyboard.
- **SETUP:** provides general parameters settings for the whole organ, including the editing of reverberation, equalizer, general pitch and tuning, temperaments, tremulants, organ sections and functioning mode of the controls on the organ console.
- **OUTPUTS:** provides all editing parameters concerning the audio outputs and inputs present in your organ.
- **TOOLS:** here it is possible to select the Pipe Sets and perform other utility operations.

These fields inform you about:

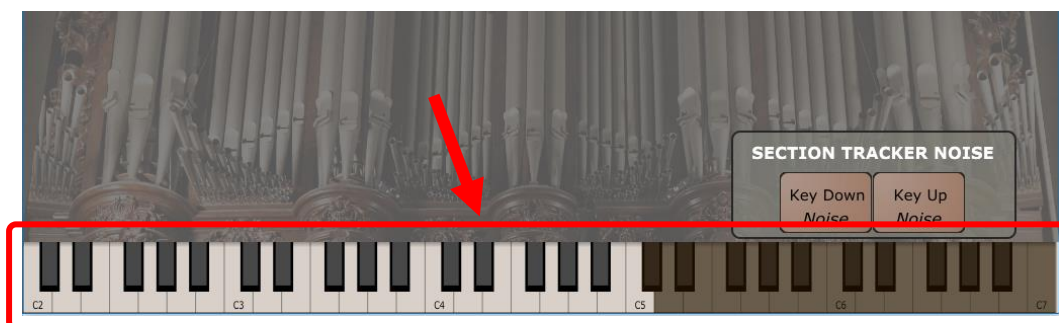
- SECTION: the selected organ division
- STOP: the selected stop
- VOICE: the voice managed with the selected stop

With this button you can show or hide the keyboard displayed at the bottom of the screen

With this button it is possible to switch on/off the selected stop.



By clicking/touching the keys of the keyboard at the bottom of the screen it is possible to play the active stops of the selected organ division, and those of the others divisions according to the active couplers.



METHODS OF PARAMETER ADJUSTMENT

The adjustment of each parameter is simple and intuitive and can be done in three modes:

- Click on the + and – screen buttons to increase or decrease the value or the drop menu to open it.
- In continuous controls by moving left or right the cursor keeping pressed the left mouse button or the finger on the touch screen.
- Using the mouse wheel.

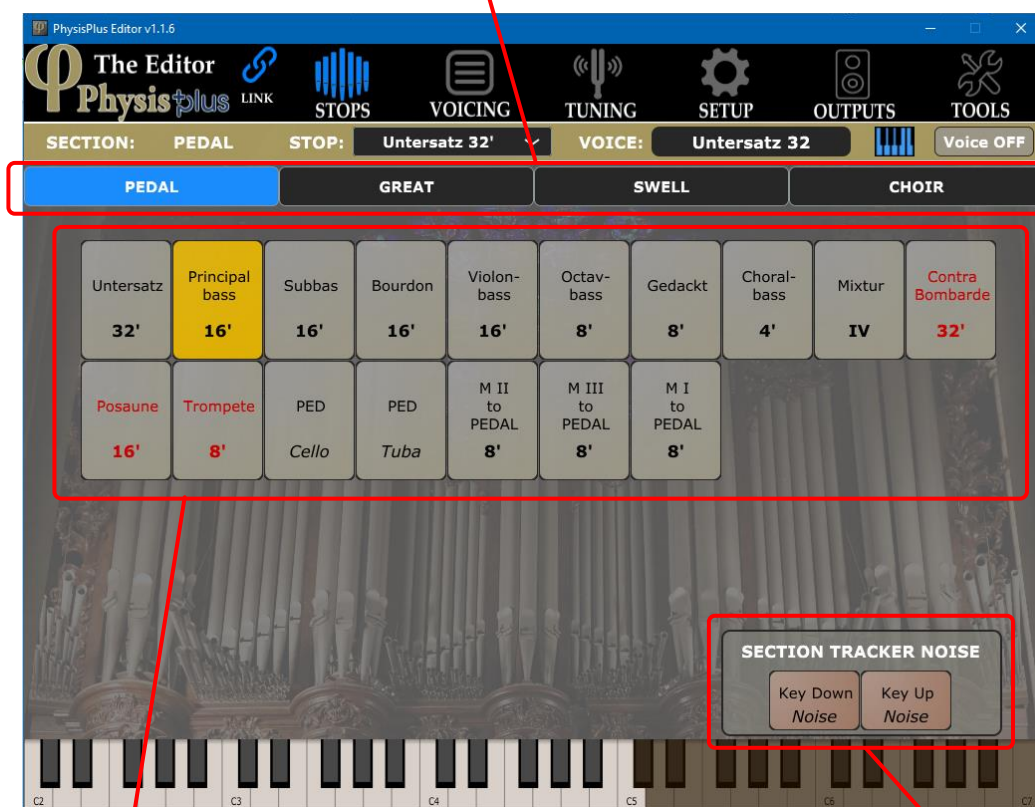
BASIC DESCRIPTIONS OF THE EDITOR SECTIONS

STOPS section

This is the default panel shown when launching the Editor. When the connection to the organ is established, this panel shows all the organ stops of the selected organ division. From this panel it is possible to activate and deactivate the organ stops by clicking/touching on the relative tab-type icon.

When another panel is showed, it is possible to display the STOPS screen by clicking/touching on the **STOPS** button at the top of the screen.

Here you can select the organ division, and thus view the available stops. The selected division are displayed in blue.



In this area are displayed the stops present in the selected organ division. Click/touch on the tab-type icon to switch on/off the stop. A stop switched on is displayed in yellow.

By clicking one of these two buttons it is possible to switch on/off the tracker noise for the selected organ division (in the models where noise is available).

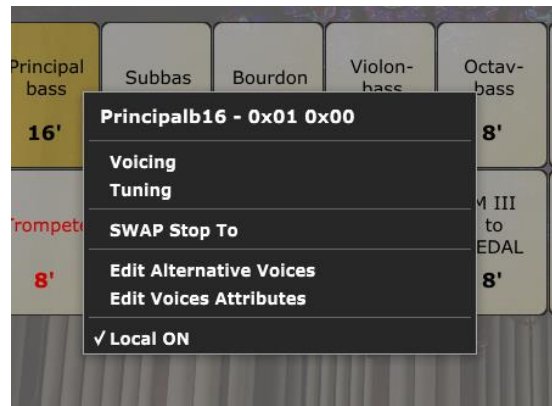
NOTE

Regardless of the type of stops (drawknob, tab or thumb piston) present in your organ model, in the Editor the stops are always displayed with tab-type icons.

To select a stop you can double click/touch the relative tab-type icon, use the drop menu showed by clicking/touching the box near the field **STOP** or using a computer keyboard with the + a – keys. Selecting a stop it is possible to access to all the sound generation parameters of the associated voice.

By doubling clicking/touching the tab-type icon displays a menu containing the following functions:

- **Voicing:** accesses the VOICING screen containing all the sound generation and audio routing parameters for the selected stop.
- **Tuning:** accesses the TUNING screen that allows to edit the Volume level and Pitch of each note for the selected stop.
- **SWAP Stop to:** after clicking/touching on this field you can select another stop with which to exchange the position with the selected one.
- **Edit Alternative Voices:** accesses the screen in which it is possible to select an alternative voice for the selected stop, load a voice file from your computer or tablet, remove a voice from the list of the alternative ones.
- **Edit Voice Attributes:** accesses the screen in which it is possible to show and edit some attributes of the selected stop.
- **Local ON:** switches Local On / Off mode for the selected stop. When the check mark is displayed, the stop is in Local On mode (the internal sound generation is activated).

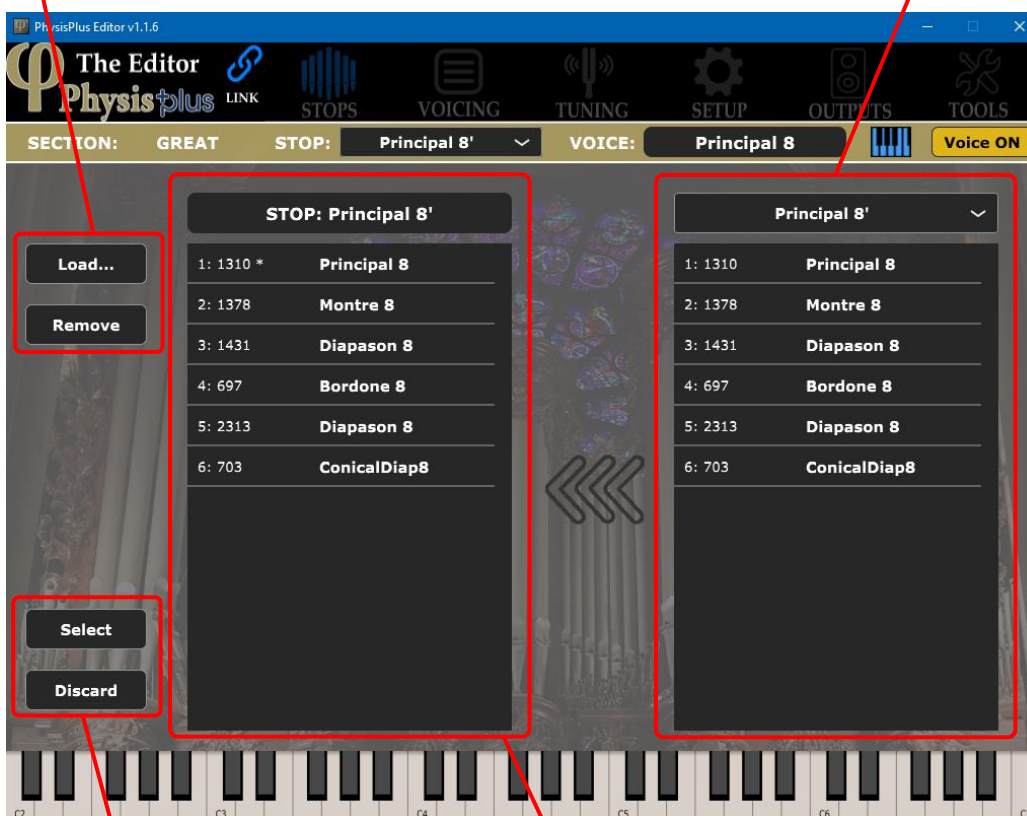


EDIT ALTERNATIVE VOICES sub-section

By clicking/touching the **Edit Alternative Voices** field in the menu described above, a screen is displayed that allow to manage voices for the selected stop.

These buttons allow you to load (**Load** button) a voice (as .VCP file) from the hard disk / internal memory of your device and insert it in the list of the alternative voices of the selected stop, or remove (**Remove** button) a voice from the list.

By clicking/touching this drop menu it is possible to display the list of alternative voices of another stop and then drag and drop it into the list of the alternative voices of the selected stop



These buttons allow you to assign to the stop (**Select** button) the selected voice in the list of the alternative voices or to quit (**Discard** button) the operation and come back to the STOPS screen.

In this area is displayed the list of the alternative voices of the selected stop, indicated by the STOP field above the list. It is also possible to select another stop, using the following methods:

- Click/touch the STOP drop menu at the top of the screen and select the stop you wish to edit.
- Hold down/out for a few moments the tab (in the ON position) or drawknob of stop you wish to edit.
- Using a keyboard computer, press the + or – keys to scroll all the available stops and select the one you wish to edit

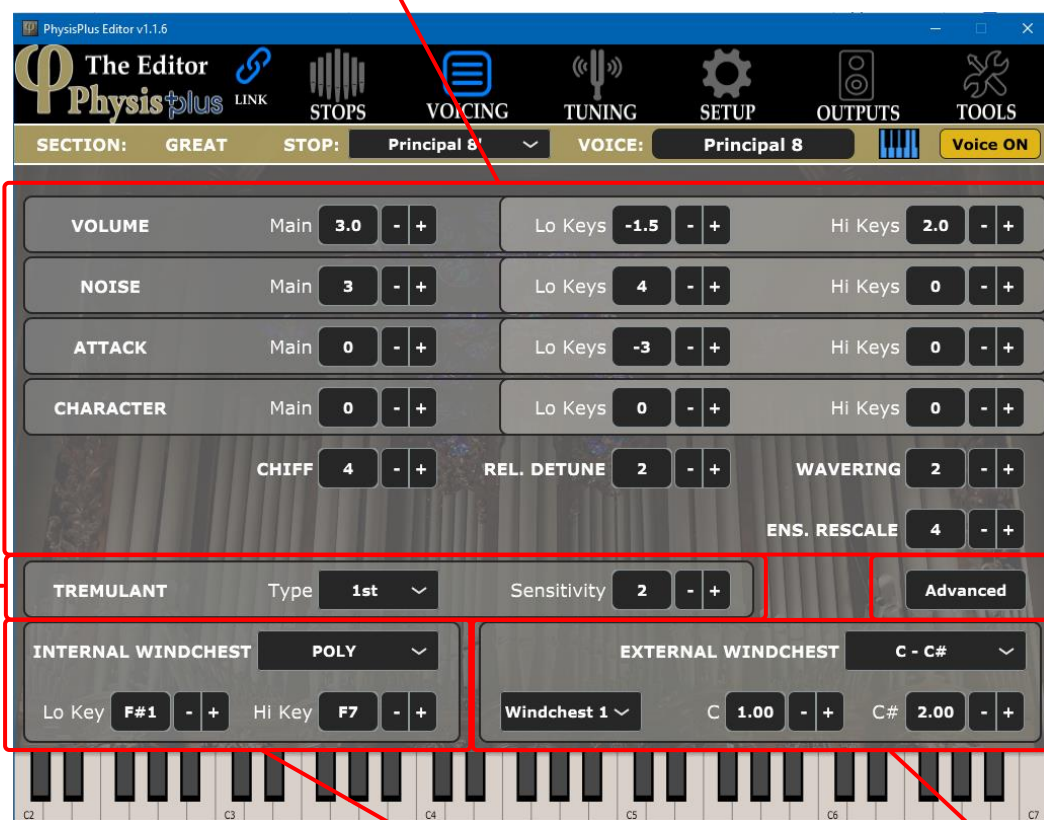
VOICING section

In this panel it is possible to edit all the sound generation parameters of the voice of selected stops. The number and function of available parameters depend on the type of voice. Orchestra voices are editable as well, and have different parameters than the ones of organ pipe voices.

To display this panel, click/touch on the **VOICING** button at the top of the screen or on the **Voicing** field in the menu displayed by doubling clicking/touching the tab-type icon in the STOPS section.

In this area are displayed all the editable sound generation parameters of the selected stop.

By clicking/touching this button displays additional advanced editing parameters



These two parameters set which tremulant and how it modulates the selected stop

With these settings it is possible to configure the windchest (panning) in the internal amplification for the selected stop.

With these settings it is possible to configure the windchest (panning) in the external amplification (MAIN. OUT audio outputs) for the selected stop.

In this screen it is possible to display the parameters of the others stops of the organ. Selecting another voice can be done using the following methods:

- Click/touch the STOP drop menu at the top of the screen and select the stop you wish to edit.
- Hold down/out for a few moments the tab (in the ON position) or drawknob of stop you wish to edit.
- Using a keyboard computer, press the + or – keys to scroll all the available stops and select the one you wish to edit.

NOTES

- To know the function of the sound generation parameters, refer to the Reference Manual of the instrument.
- For the detailed description on configuring the external windchest, refer to the guide “PhysisPlus ExtAmpl Guide” downloadable from the “Document Collection” section of each Physis Plus model web page of the www.viscountinstruments.com web site.

TUNING section

In this panel it is possible to adjust the volume and pitch of each single note of the selected stops.
To display this panel, click/touch on the **TUNING** button at the top of the screen or on the **Tuning** field in the menu displayed by doubling clicking/touching the tab-type icon in the STOPS section.

In this area it is possible to select (**Select Preset** drop menu), store (**Add** button) and Remove (**Remove** button) preset curves of volume and pitch.

These buttons allow you to Copy and Paste volumes or pitches from one stop to another one (**Copy**, **Paste** buttons), zoom the graph (**Scale +**, **Scale -** buttons) shift up or down the curve (**Offset +**, **Offset -** buttons).



Use this drop menu to display Volume or Pitch graph.

These buttons allow you to reset the graph (**Reset** button), apply a random regulation (**Random** button), smoot the graph (**Smooth** button).

These buttons allow you to zoom in or out the graph.

In this area is displayed the Volume or Pitch graph. Each segment is the volume/pitch value of each note. By clicking/touching on the segment it is possible to regulate volume or pitch.

NOTE

Although it is also possible to select the Orchestra voices in the STOP field, notes volume and pitch of these voices are not adjustable.

SETUP section

This panel collects several settings of the whole organ, and not related to the stop selected in the sections previous described.

To display this panel, click/touch on the **SETUP** button at the top of the screen.

The organ settings are divided into five sub-sections, selectable using the buttons on the top of the panel:



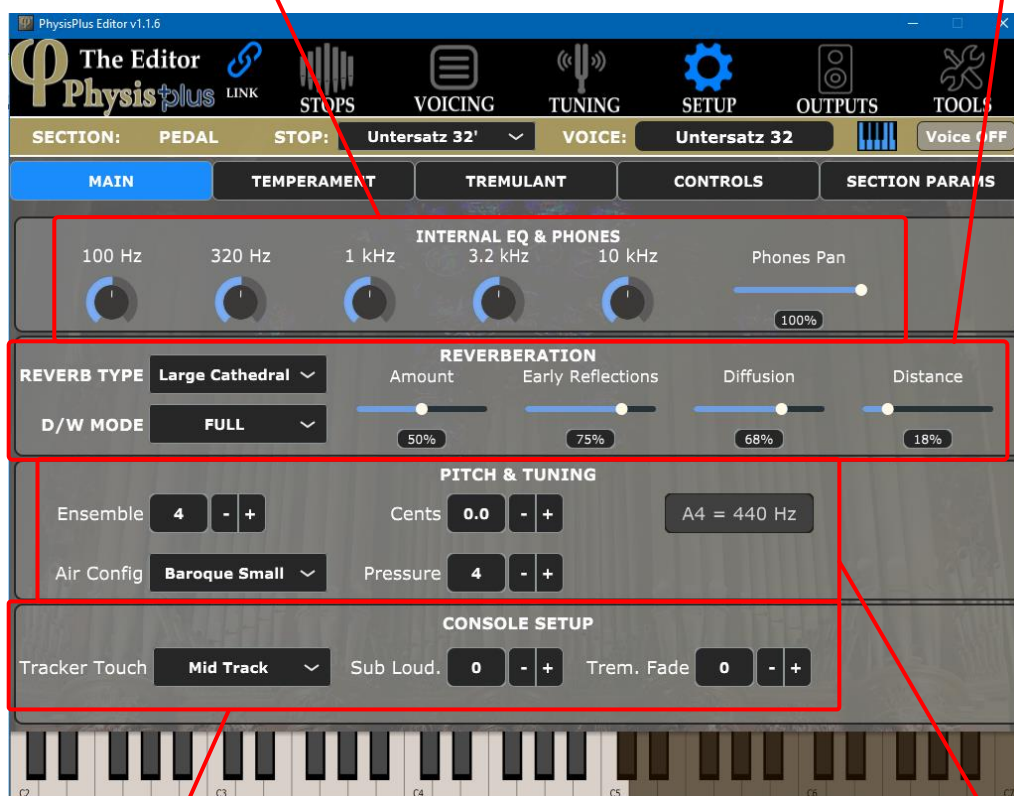
NOTE

To know the function of parameters indicated in the next descriptions, refer to the Reference Manual of the instrument.

MAIN sub-section

In this area it is possible to adjust the main equalizer of the internal amplification and the stereo panorama width in the headphones.

In this area it is possible to select the Reverb type and adjust its sound parameters.



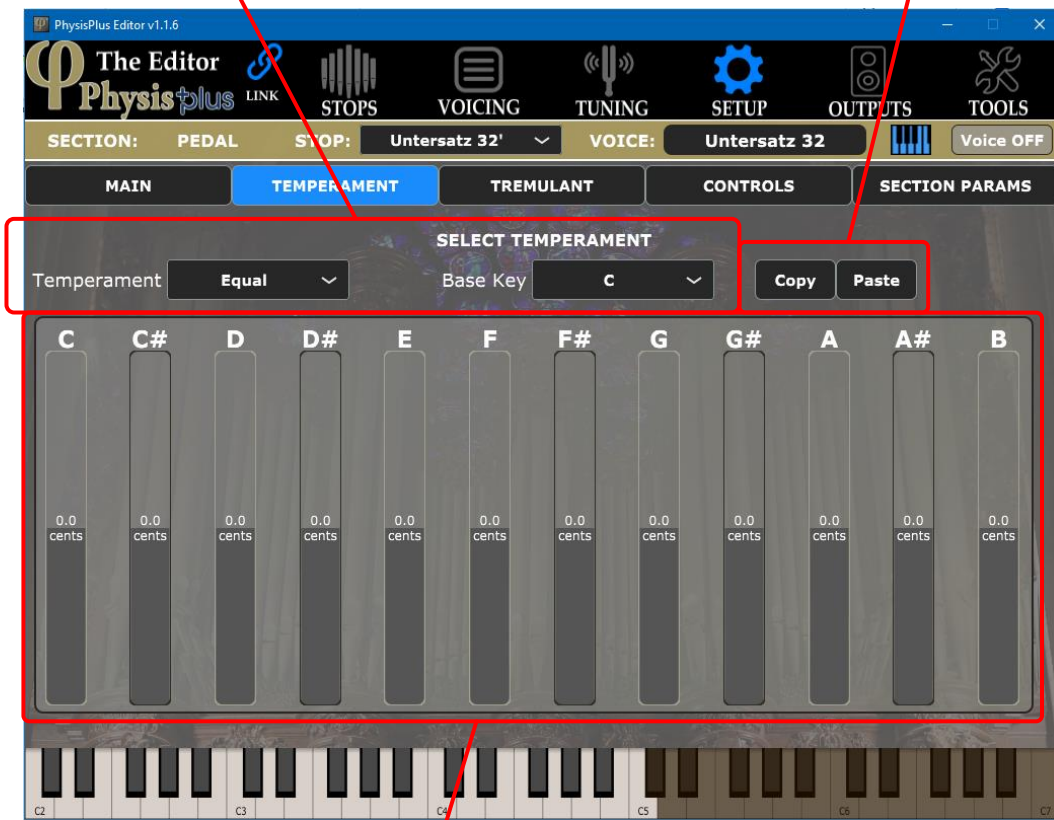
In this area it is possible to select the type of tracker touch and adjust the loudness and the fade of tremulants.

In this area it is possible to adjust the main pitch of the organ and the parameters related to the air pressure and wind distribution system.

TEMPERAMENT sub-section

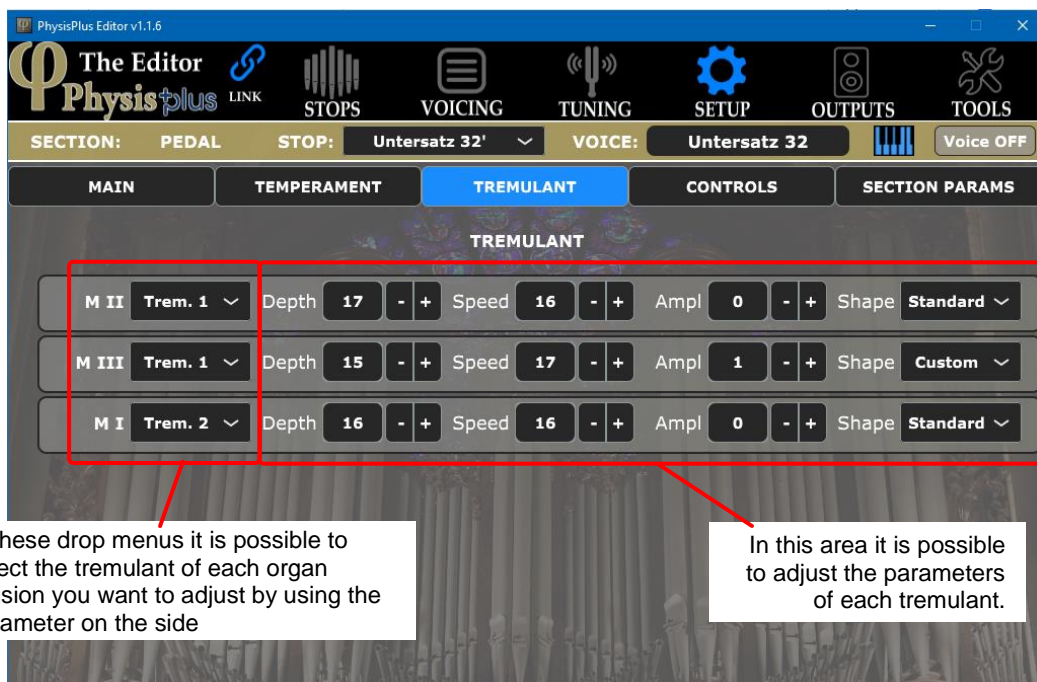
By using these drop menus it is possible to select the temperament and the base key.

By using these buttons it is possible to copy the pitch shifts displayed in the graph and paste them in one of the Custom temperament selectable in the menu TEMPERAMENT on the left.



This graph displays the pitch difference of each note with respect to the Equal temperament. Using a Custom temperament, click / touch on a segment of a note to adjust the difference.

TREMULANT sub-section

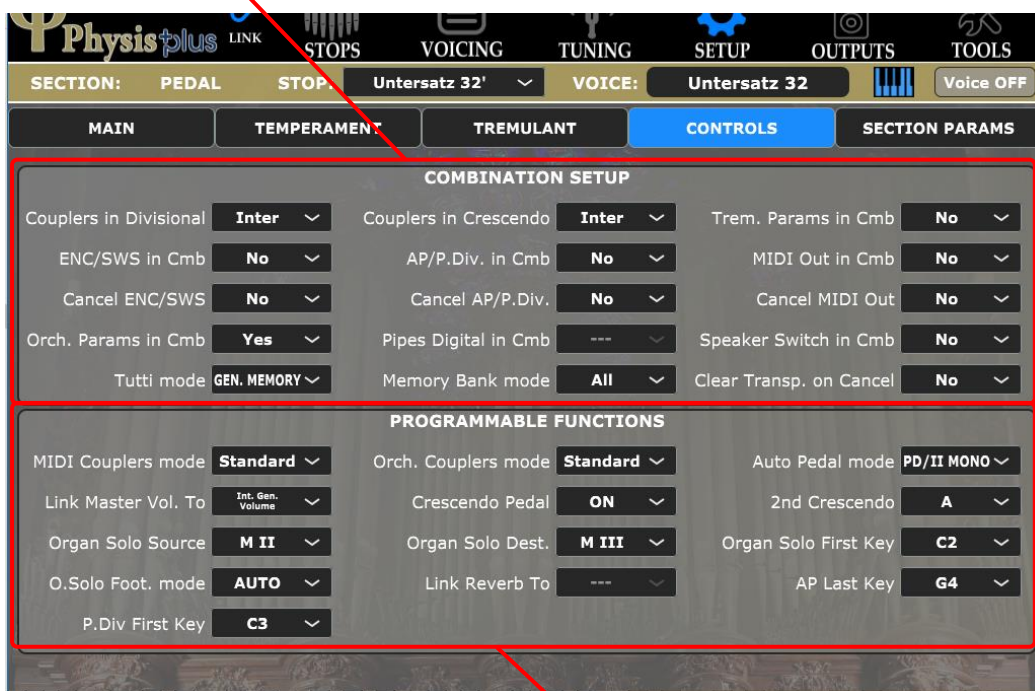


In these drop menus it is possible to select the tremulant of each organ division you want to adjust by using the parameter on the side

In this area it is possible to adjust the parameters of each tremulant.

CONTROLS sub-section

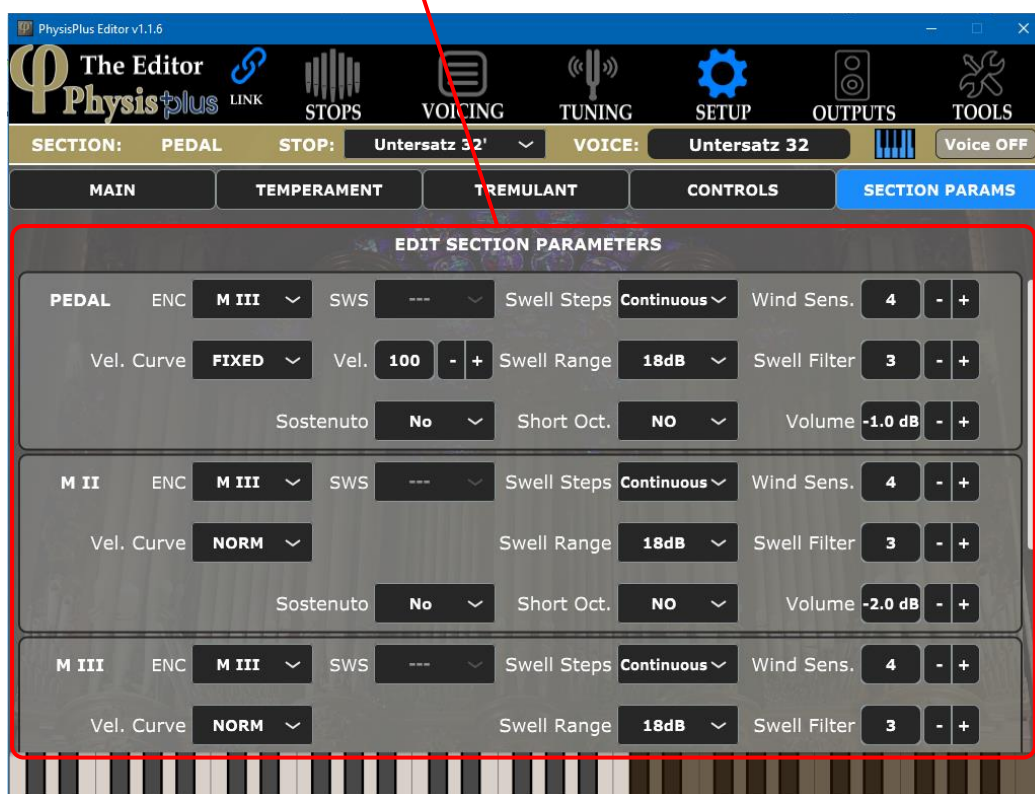
In this area it is possible to set several options related to the combinations.



In this area it is possible to set several options of the controls available in the organ console.

SECTION PARAMS sub-section

In these areas it is possible to set several options regarding the shoes, velocity curve, short octave and volume for each organ division.



OUTPUTS section

In this panel it is possible to adjust several settings related to the [PROG. OUT] audio outputs present in the rear panel of your Physis Plus organ.

To display this panel, click/touch on the **OUTPUTS** button at the top of the screen.

In this area it is possible to set the re-route of the audio inputs and the Orchestra voices to the outputs.

By clicking the **Sub Setup** button it is possible to display the settings to set the audio outputs as dedicated outputs for subwoofers.

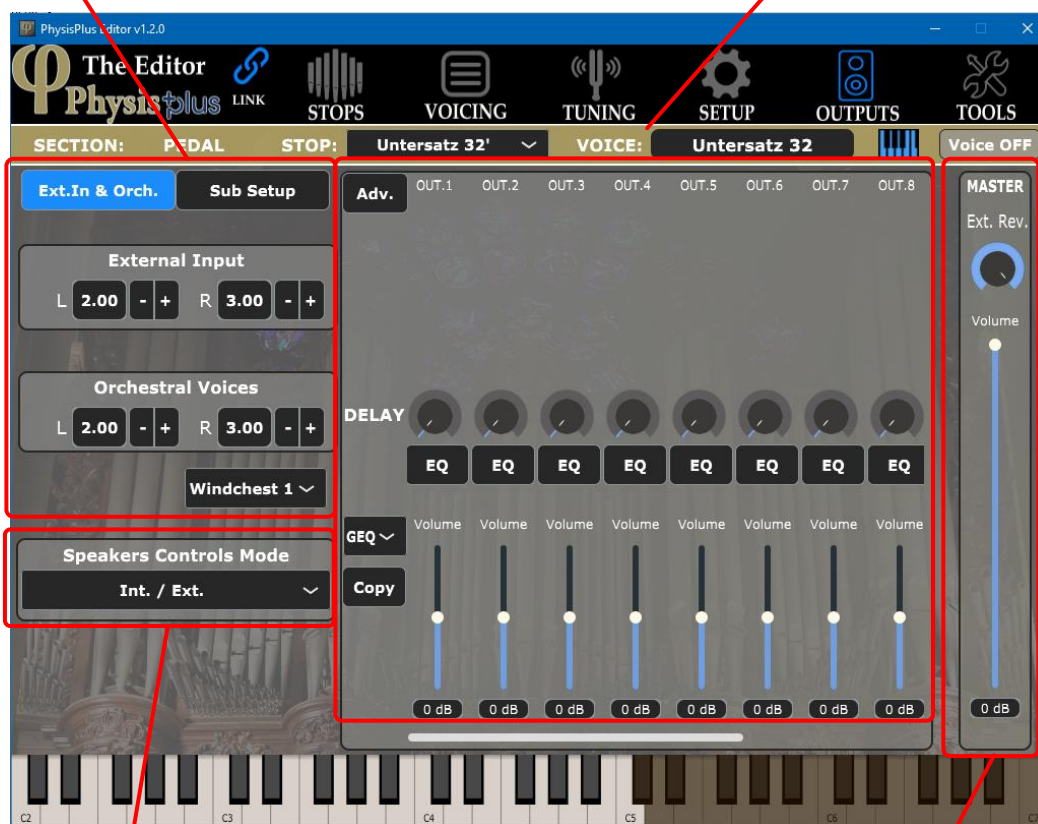
This area contains the regulations to control volume and delay of the audio signal in each [PROG. OUT] audio output.

By clicking the **GEQ** or **PEQ** button it is possible to select the equalizer type of each audio output.

By clicking the **EQ** button it is possible to display the settings to set the equalizer of each audio output.

By clicking the **Copy** button it is possible to copy all the controls value of an audio output to another output.

By clicking the **Adv.** button it is possible to display the settings to set the audio outputs operating mode and to adjust the reverb level in each audio output.



This drop menu contains the settings to select the operating mode of the AMPLIFICATION controls of the organ console.

In this area it is possible to adjust the master level of audio and reverb present in all the audio outputs.

NOTES

- For the detailed description of adjusting and configuring the [PROG. OUT] audio outputs, please refer to the guide "PhysisPlus ExtAmpl Guide" downloadable from the "Document Collection" section of each Physis Plus model web page of the www.viscountinstruments.com web site.
- The Delay control and PEQ selection of equalizer type are only available on certain models.

TOOLS section

In this panel it is possible to select the Pipe Set and use some utility functions.
To display this panel, click/touch on the **TOOLS** button at the top of the screen.

Use this drop menu to select the desired organ Pipe Set.

Click/touch here to display information about your organ.

Click/touch here to export as .TXT file the status of your organ.

Click/touch here to upload demo songs (.MID files) in to the organ.

Use this drop menu to select an input MIDI device to re-route to the organ.

Check the **Zoom** cell to enlarge the keyboard image.
Check the **Extended Range** cell to to extend the keyboard image including maximum transposition.

NOTE

The **EXPORT** function is only intended to print the entire organ configuration in a readable text file, which can be consulted by the user. It is not a function for saving backup files of the instrument reloadable later. To do this, use the **SAVE SNAPSHOT** function of the instrument (see the Reference Manual of your organ).



Viscount International S.p.A.
Via Borgo, 68 / 70 – 47836 Mondaino (RN), ITALY
Tel: +39-0541-981700 **Fax:** +39-0541-981052
Website: www.viscountinstruments.com